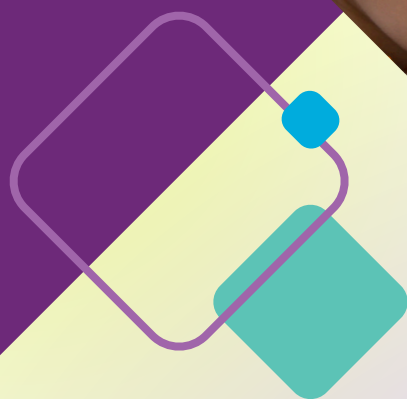




nellies.org

Nellie's

Shelter,
Education
& Advocacy
For All
Women and
Children



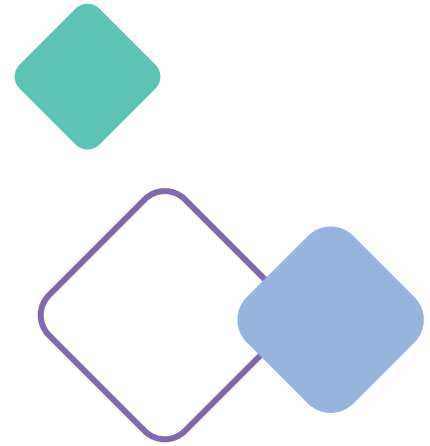
Leading
Change

ANNUAL
REPORT

21
22

Land Acknowledgement

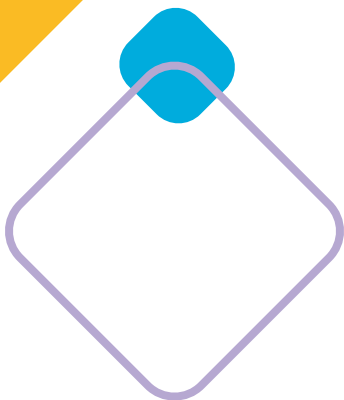
We acknowledge the land on which Nellie's operates is the traditional territory of many nations, including the Mississaugas of the Credit, the Anishnabeg, the Chippewa, the Haudenosaunee and the Wendat peoples, and is now home to many diverse First Nations, Inuit and Métis peoples. We also acknowledge that Toronto is covered by Treaty 13 with the Mississaugas of the Credit.



About Us

Since 1973, Nellie's has been providing shelter and support to all women and their children fleeing violence, intimate partner abuse, trauma and homelessness. Nellie's is a community-based feminist organization which operates within an anti-racist and anti-oppression framework.

We are committed to social change through education and advocacy, to achieve social justice for all women and their children.



Message from Executive Director Jyoti Singh



The move into our beautiful new shelter has significantly changed how we are able to operate—for the better.

For decades, we welcomed women and their children into a building we had long since outgrown. And for the last two years, we persevered through the challenges created by this pandemic, including weathering COVID-19 outbreaks, modifying our programs and services for health and safety reasons, and working out of two locations (our shelter building and a nearby hotel because our old building was deemed too small to safely practice physical distancing).

Being in the new building allows us to treat women and their children fleeing violence and homelessness with the dignity they deserve. It has capacity for up to 40 beds across 22 bedrooms (an increase from 36 beds across 9 rooms in the old building), giving family units some privacy, and ample space to provide supportive programs and services with a focus on positive spaces, therapeutic healing and personal growth.

However, our expansion is not just about providing emergency shelter and programs for women and their children; it is also about freeing up the organization to better advocate for them. It is no secret that the instability caused by the pandemic has led to an increase in domestic violence in Canada. As a leader in the gender-based violence sector, Nellie's is proud to be leading change by developing innovative solutions to shape a clear and distinctive path forward for those who need us most.

We are walking alongside our community and strategic partners to collaborate, convene new allies, build capacity and work to close gaps in the system. We have partnered with the City to examine policies that disproportionately affect the most vulnerable, and have joined with partner organizations to create a greater positive impact for women and their children currently in the shelter system. This path we are walking will provide a better crisis response and begin to create the social change needed to prevent gender-based violence before it begins.

Thank you to our staff for dedicating yourself to support the women and their children who need us, to our volunteers for passionately devoting your time and energy, to our neighbours and community partners for always welcoming and supporting us, to our Board who has worked tirelessly to guide us through these uncertain times with their unwavering leadership, and to the women and their children who continue to put their trust in us every day.

Finally, thank you to our community funding partners and to every one of our donors for standing with us.

Our role in the community is a demanding one, but together we can lead change.

A handwritten signature in black ink, appearing to read 'Jyoti Singh', with a long horizontal line extending to the right.

Jyoti Singh, Executive Director

“There Will Be Many More Like Me”

Five years ago, Krystal Joseph showed up at Nellie’s, pregnant with her two-year-old daughter in tow. She had just a few hundred dollars to her name and nowhere else to go.

“I was so scared that first night. I had no one else here in Canada, but the staff at Nellie’s took us in like we were family,” Krystal said back then.

Krystal and her girls, Joshae and Journeiy (who was born at Nellie’s), stayed for 14 months. In that time, she began to process the trauma she experienced, learned how to cook on a budget, developed a better understanding of how to manage her finances, passed her high school equivalency exam, started college, volunteered often and found her first job in Canada.

Since moving into her own apartment, her life has been an amazing adventure—and she now makes it her mission to support those dealing with what she once faced.

“I have used my experience to show others that homelessness is not the end of the world. We don’t know what tomorrow brings, but if we hook up to the right support we can have a successful life moving forward,” says Krystal.

First, she worked with vulnerable youth in Toronto. When the pandemic hit, she became a case manager at one of the city’s shelter hotels. Recently, she moved to Hamilton to work with women living at Good Shepherd.

“I want the women I work with to know that I know what it’s like and that I’ve been there. Life doesn’t stop because you move to a shelter. I tell them that nothing has been taken away from you; you still have your integrity and your dignity and you can persevere,” she says.

Not only have Krystal’s living and working situations blossomed since she left Nellie’s, but her family has grown as well. In 2021, she married her partner, Prosper, and they welcomed son, Micah, to the family. Big sisters Joshae, now 6, is learning to read and write and has dreams of being a gymnast, and Journeiy, now 4, fills every room with joy, love and peace.

Krystal hopes to push her career even further, and is currently exploring her options to pursue a political science degree.

“Any contribution people make to Nellie’s is money well spent, I’m living testimony of that. I’m not the only Krystal in the world; there are many more like me that will walk into Nellie’s, be in need as I was in need, and will come out stronger for it.”





From Derelict Building to Beautiful New Shelter

It was a long road to get to the beautiful new shelter. But while the large, charming Victorian home is perfect for our needs, it was in less than perfect shape when it was first purchased.

“It was actually in very rough shape and somewhat derelict,” says Steve Hilditch, Principal at Hilditch Architect Inc., the firm that saw the vision and designed the space. “The building has a grandeur to it that you don’t often find these days, but it was difficult to see the vision back then.”

The building has an old-world charm with a modern contemporary twist, thanks to a newer addition attached to the Victorian building. It is 21,800 sq. ft., compared to the old shelter’s 8,900 sq. ft. footprint. Yet it still feels cozy and welcoming, with capacity for up to 40 beds spread out over 22 bedrooms, compared to 36 beds in 9 bedrooms in the old shelter building. Each bedroom has its own private bathroom, four of which are barrier-free. Many shelters, Steve says, have dorm-style rooms with bathrooms down the hall, giving residents little privacy as they work through difficult issues and traumas in a shared space.

“For Nellie’s, we wanted to have a model where every family unit had their own space. Having your own room with your own bathroom gives people dignity,” says Steve. In common areas, all washrooms are gender-neutral, making transwomen and non-binary

people feel safer, and more welcomed, in the space.

The program space nestled up in the third floor, complete with elegant sloped ceilings, provides ample space for the counselling and group programs that empower women and their children to take steps toward accomplishing the next chapter in their lives. They are warm and welcoming spaces, perfect for everything from play, to learning, to meditation, to group work.

The building is also one of just a handful of pet-friendly shelters in Toronto, meaning women and their children don’t have to make the difficult decision to leave their pet behind. There is also a pet care room and a green space where pets (and kids!) have space to play.

“It’s important for the women and their children who pass through this shelter to feel like their lives are valued,” says Steve. “They have come out of a difficult time in their lives; giving them that support, physically through the architecture, is something that helps make them feel good about the transition.”



2021/2022 Shelter Stats

Nellie's has a mandate to help all women and their children, regardless of why they are homeless. Each comes to us with different experiences and needs. In 2021/2022, a total of 69 women stayed at Nellie's.

28 women fled violence/intimate partner abuse

45 single women arrived at Nellie's

24 families (women with children) arrived at Nellie's

44 children (ages 0-17) lived at Nellie's

2 babies were born at Nellie's

3-6 months is the average length of stay at Nellie's

The Year in Review

Spring 2021

The third provincial lockdown, once again, halted in-person programs and closed common areas in the shelter. Residents were asked to avoid contact with others, meals were taken in their rooms and all adult and youth programs went virtual. With schools closed, school-aged children attended virtually from the room they shared with their mother.

Summer 2021

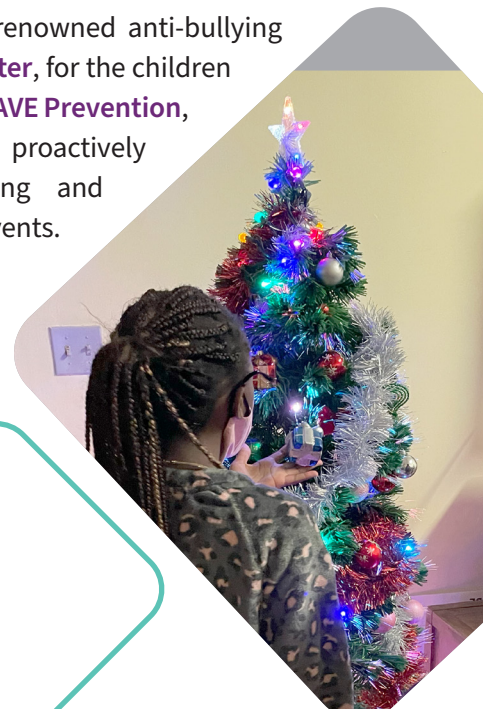
As restrictions lifted, the women and children at Nellie's had more freedom of movement. Even though pandemic-related construction delays postponed our move to the new shelter, we began exploring ideas for new programs and services as a larger physical space means the ability to expand our efforts.

Fall 2021

We said goodbye to our Queen Street East neighbours as our administrative and Community Support and Outreach office storefront closed, and we moved that part of our operations to the new shelter. Only our food program, which supports 60-80 families in the community every week, remained. It moved into the Ralph Thornton Community Centre.

Winter 2022

At the end of February, we moved into the beautiful Victorian building that we now call home. With its ample program space, we immediately introduced two new anti-violence programs: the world-renowned anti-bullying program **Rock and Water**, for the children living at Nellie's, and **PAVE Prevention**, which is dedicated to proactively preventing, responding and healing from violent events.





Thank You to our Donors

We are always forever grateful for the generosity of our donors. It is because of you that we can welcome women and their children impacted by abuse, trauma and homelessness as they take the steps toward accomplishing the next chapter of their lives. Thanks to your continued support, we are leading the change to stem the flow of violence at a systemic level.

Every person that comes to Nellie's counts on us to be there for them, and we thank every corporation, foundation, community member and individual supporter who has helped us do just that.

We recognize **La Fondation Emmanuelle Gattuso** for continuing to support our Children's Program, which helps the children and youth who come to Nellie's work through their emotions in an age-appropriate way.

We also recognize the following foundations for their continued support in helping Nellie's meet its everyday operational and program needs:

Tippet Foundation

The Frederick and Douglas Dickson Memorial Foundation

Lewis & Ruth Sherman Foundation

The Catherine and Maxwell Meighen Foundation

Finally, completing the renovations of the new shelter was a huge priority this past year and we are grateful to those who helped us do that.

The Rotary Club of Toronto continued its long history of giving to Nellie's with a donation of \$10,000 toward the cost of window coverings without cords to keep kids safe.

The Bickle-Wilder Foundation renewed its support of our capital campaign with a second gift of \$25,000 toward overall construction costs.

The **Flanagan Foundation** gifted \$75,000 toward the purchase of furniture throughout the shelter.

The **Ontario Realtors Cares Foundation** contributed \$3,200 toward our landscaping.

Thank You to our Board

We are forever grateful to our Board of Directors for continually rising to the challenge to better respond to today's realities and tomorrow's needs. In 2021/2022, we welcomed three new board members. Each bring a wealth of experience and expertise to Nellie's.

Nancy Mrazek is a construction executive. "As a woman in a male-dominated environment, I have learned to speak up to be respected and heard throughout my career. I recognize that not everyone has had the opportunities that I have had."

Sushma Narisetty is a professional engineer who also mentors newcomers and female professionals. "We went from a smaller place to a bigger place and we celebrated that but it also showcased that the need is still out there."

Danijela Obradovic is a corporate governance lawyer, who at 12 years old, lived in a refugee camp after fleeing her hometown of Sarajevo, Bosnia during the civil war. She immigrated to Canada with her family a few years later. "Because of where I come from, I really appreciate the magnitude of the work people do to help in changing lives."

This year, we also said goodbye to co-chair **Suzanne Johnson**, who joined the board in 2018. A lawyer who is passionate about ensuring adequate access to the justice system, Suzanne aided Nellie's in strategically building internal capacity. "Nellie's recognizes that life isn't always easy for everyone and gives them a safe place."

And, in early 2022, **Dana Granofsky** became co-chair. A small business owner and trained mediator, Dana plans to leverage her knowledge and experience to support Nellie's. "Nellie's has been at the forefront of identifying needs and generating solutions. It is what uniquely positions us to be a leader in this space."

Board of Directors

EXECUTIVE COMMITTEE

Donnalea Sparling
Co-Chair

Dana Granofsky
Co-Chair

Nancy Mrazek
Treasurer

Erin Pollon
Secretary

MEMBERS-AT-LARGE

Charrissa Klander

Sushma Narisetty

Danijela Obradovic

Lindsey Walton

Dale Yurka

Senior Management Team

Jyoti Singh
Executive Director

Janna Cheng-Brown
Administrative Coordinator

Ingrid Graham
Director of Development

Jiin Yiong
Program Director

Supervisors

Maureen Caines-Comrie
Shelter Program Supervisor

Candice Cosbert
Shelter Direct Service Supervisor

Ariana Gomes
Community Support & Outreach Supervisor

Financial Report Year End March 31, 2022

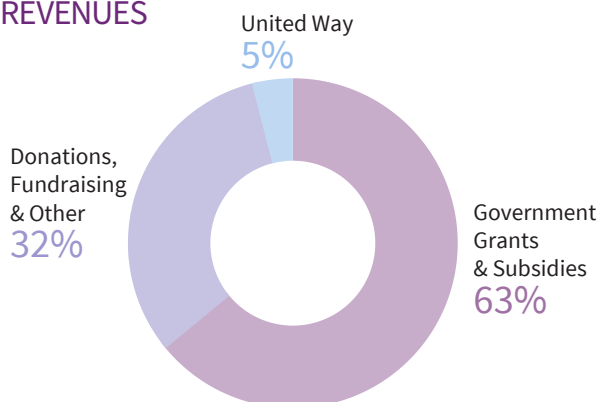
REVENUE	2022	2021
Government grants	\$1,452,731	\$1,460,434
MCCSS one-time pandemic relief funding	832,867	941,628
City of Toronto – per diem	230,023	226,116
City of Toronto – personal needs allowance	29,962	20,261
City of Toronto – other employment supports	32,434	30,435
United Way Funding	208,608	180,719
Donations and Fundraising	1,104,541	1,371,039
Bequests	154,752	35,880
Interest and other	45,324	1,148
	\$4,091,242	\$4,267,660

EXPENSES (Schedule A of our Audited Financial Report)

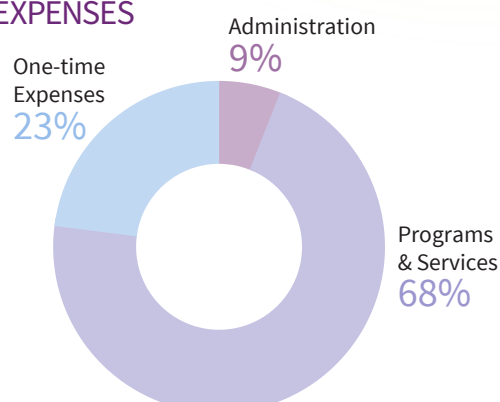
Property	\$279,392	\$238,914
Administration	348,076	199,418
Staffing	2,038,268	1,924,683
Clients	273,827	165,033
One-time expenses including accommodation	852,294	743,204
	\$3,791,857	\$3,271,252

Excess of revenue over expenses from operations	299,385	996,408
Income from amortization of deferred capital contributions	31,103	—
Amortization of capital assets	(65,805)	(17,042)
Deficiency of revenue over expenses from capital assets	(34,702)	(17,042)
Outlays for Mary Prichard Fund	(750)	(1,040)
Deficiency of revenue over expenses for Mary Prichard Fund	(750)	(1,040)
Gain on sale of Broadview Shelter site	2,310,814	—
Excess of revenue over expenses for the year	\$2,574,747	\$978,326

REVENUES



EXPENSES



See full Audited Financial Statements, including notes at nellies.org



Vision for Tomorrow

In 2023, Nellie's will be celebrating 50 years. It is an incredible milestone, and a reminder of the shelter and support we have given to thousands of women and their children fleeing violence, trauma and homelessness since 1973. But if the pandemic has highlighted anything, it is that gender-based violence is still prevalent in our society.

Our advocacy efforts have always been one of our greatest strengths, and we are focused on expanding our reach.

In early 2022, we became the first gender-based violence organization in Canada to implement the world-renowned anti-bullying program Rock and Water. This program helps to support the healing and growth of children living at Nellie's, while also providing them with life-long violence prevention skills. A number of staff members have also been trained in PAVE Prevention (Proactive Anti-Violence Education), which is dedicated to proactively preventing, responding and healing from violent events, and are integrating it into our support programs for the women in our community. The next step is focused on training our community partners.

This is just the beginning; the goal is even greater. We are working to create a full-spectrum prevention approach to gender-based violence to stem the flow of violence.

At Nellie's, we are embracing the road less travelled. Leading change is about being innovative and thinking differently, so that one day, we will realize a world free of oppression and violence for all women and children.

CRISIS

Tel: 416-461-1084

Email: programs@nellies.org

ADMINISTRATION

Tel: 416-461-8903

Email: community@nellies.org

COMMUNITY & OUTREACH SUPPORT

Tel: 416-461-3404

Tel: 416-461-2052

FUNDRAISING & DONATIONS

Tel: 416-645-1419

Email: fundraising@nellies.org

HOUSING SUPPORT

Tel: 416-461-0980

Fax: 416-461-0970

Email: tsw@nellies.org

MAILING ADDRESS

P.O.BOX 98118

970 Queen Street East

Toronto, ON M4M 1J8

 nellies.org

 [@nelliesshelter](https://www.facebook.com/nelliesshelter)

 [@nelliesshelter](https://twitter.com/nelliesshelter)

 [@nellies_shelter](https://www.instagram.com/nellies_shelter)

CHARITABLE NUMBER:

11930 2727 RR0001



Nellie's

Shelter, Education & Advocacy
For All Women and Children